

KRONENWETTER: JOURNEY THROUGH PROGRESS

OVERALL LAYOUT

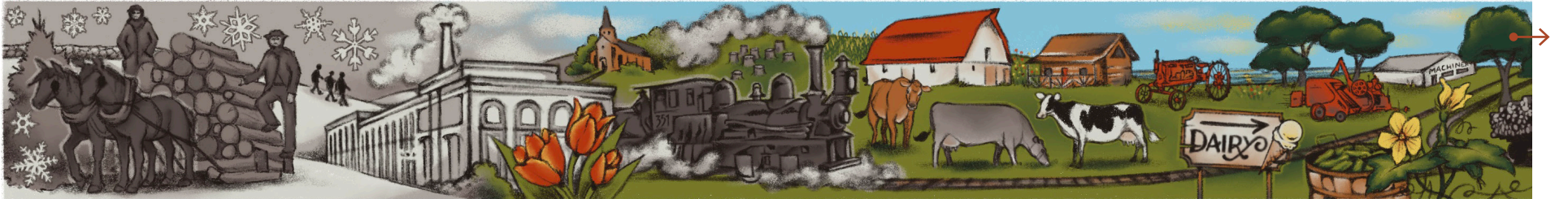


Kronenwetter: Journey Through Progress commemorates the establishment of a community, reaching back in history to show what paved the way to make Kronenwetter the community it is today.

Additional features:

- Winter, spring, summer and fall motifs to showcase four-seasons climate
- Black and white color scheme in historically appropriate area

ZOOMED LAYOUT



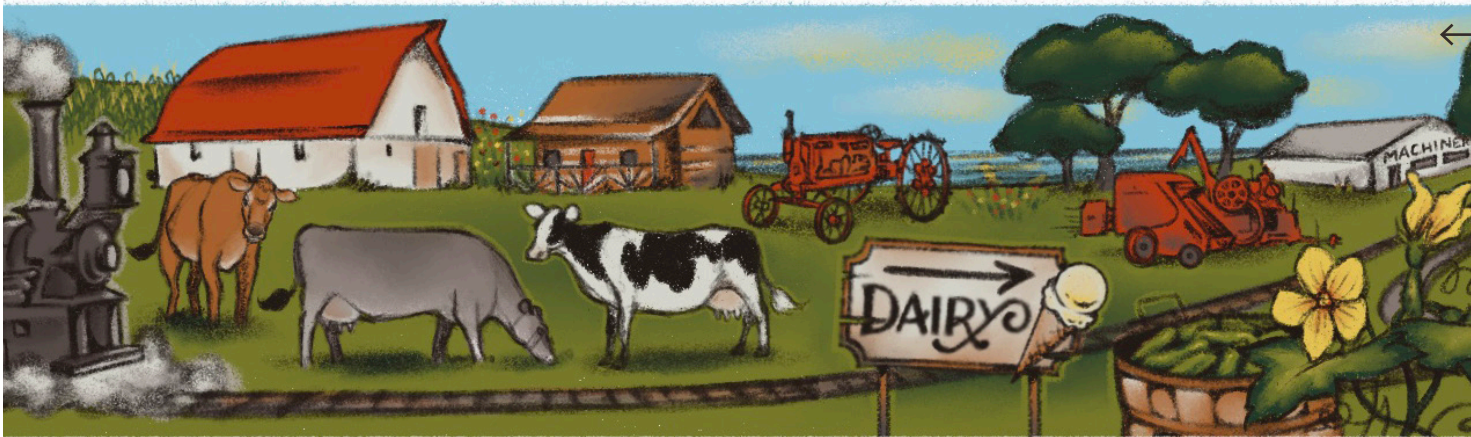
PROPOSED DESIGN

KRONENWETTER: JOURNEY THROUGH PROGRESS

1880-1905

Lumberjacks and their workhorses pull logs on sleds, a nod to our winter landscape and the difficult work of logging and clearing land for inhabitants.

On a hill in the distance, Polish farmers who came to farm found land not fit for farming, so they had to walk 3-6 miles to the paper mill to make their living.



1906-1945

A Shay train pulls away from the paper mill past a pastoral scene. Tulips represent Dutch inhabitants.

As time advances, stumps are blasted to make way for proper farm land. Many people made a living off of dairy through the local dairy/cheese factory.

Pickles also generated income for local farmers who picked cucumbers as a regular cash crop. Many youngsters went to the pickle sorter to make money, which some used for clothing.



KRONENWETTER: JOURNEY THROUGH PROGRESS

1946-1960

The beginning of modern housing development brought on the scenes of neighborhoods, buses and cars that we are familiar with today. A ranger and fire station and hydrants

were installed. Many farmers made a living raising turkeys. The growing automobile industry meant hauling for the local paper mill, which then expanded into more business including transporting granite, cattle and other agriculture

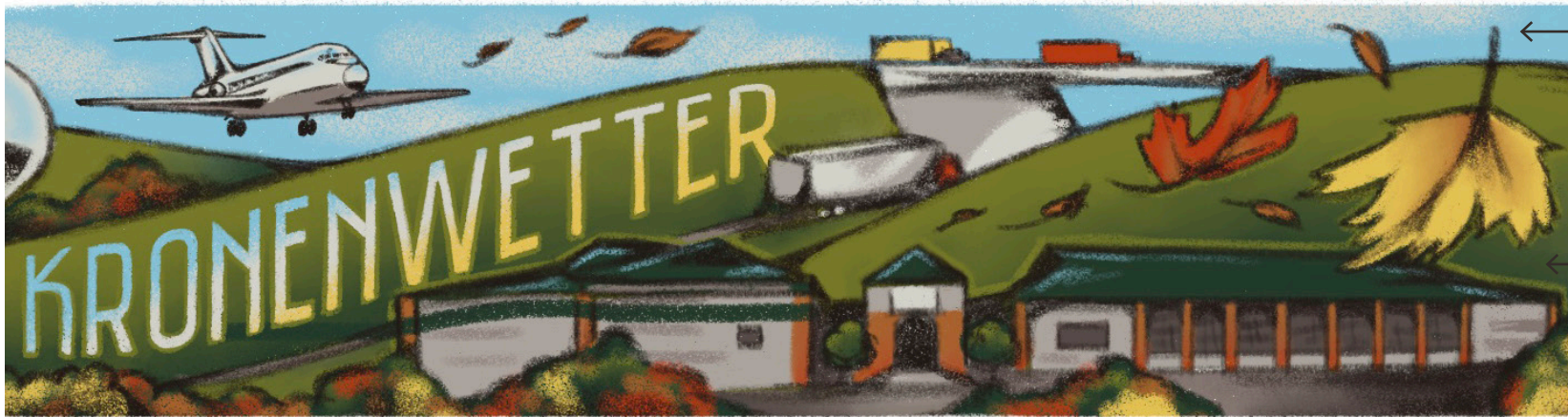
needs. Factory work developed with the creation of the Weston Power Plant, fuel storage tanks and other important area companies that boosted the local economy.



1960 - 1969

In 1962 a watertower was constructed to serve the needs of the growing population.

1969 saw the first plane that landed at Central Wisconsin Airport.



1970-present

Kronenwetter continues to be a great place to live, raise a family and become a part of a community.

